



# Montagu Mews West, W1H

**LUROT BRAND**

MEWS SPECIALISTS EST. 1971

020 7590 9955

[lettings@lurotbrand.co.uk](mailto:lettings@lurotbrand.co.uk)



Bedroom

Reception



# Montagu Mews

## West, W1H

Unfurnished

£1,195 PW

---

A beautifully refurbished light two bedroom mews house in the highly desirable Montagu Mews West.

The raised ground floor offers a lovely modern reception room with wooden floors, the ground floor has a large eat in kitchen and small patio area. The first floor benefits from two good sized double bedrooms, one with an ensuite bathroom and fitted wardrobes.

### LOCATION

Montagu Mews North is located just moments away from the small boutiques and restaurants of Marylebone High Street.



Reception

Exterior





Kitchen

Patio



## FEATURES

Reception Room	Second Double Bedroom
Kitchen/Dining Room	Balcony
Master Bedroom with En	Excellent Storage Throughout
Suite Bathroom	

## OTHER USEFUL INFORMATION

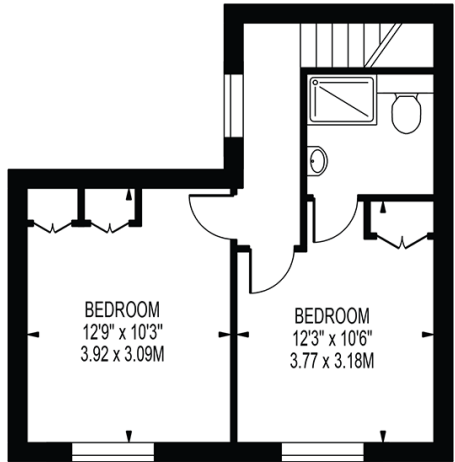
EPC	D
Council Tax Band	F
Deposit Amount	£7,170.00

## NEAREST TUBE STATIONS

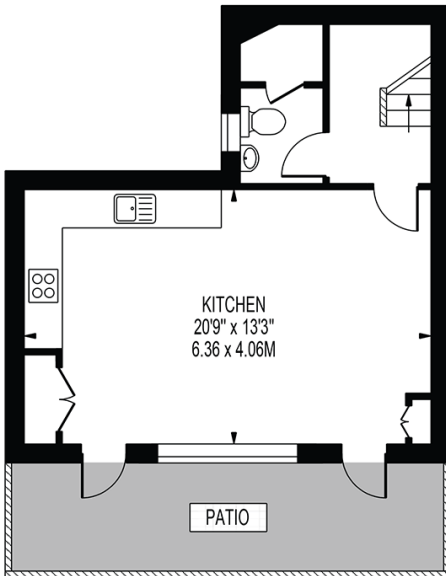
Marble Arch Station (Central line)

# MONTAGU MEWS WEST

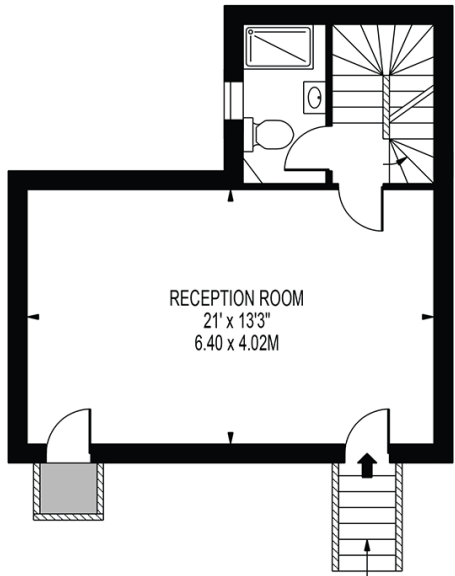
APPROXIMATE GROSS INTERNAL FLOOR AREA: 1072 SQ FT - 99.59 SQ M



FIRST FLOOR



LOWER GROUND FLOOR



GROUND FLOOR

FOR ILLUSTRATION PURPOSES ONLY

THIS FLOOR PLAN SHOULD BE USED AS A GENERAL OUTLINE FOR GUIDANCE ONLY AND DOES NOT CONSTITUTE IN WHOLE OR IN PART AN OFFER OR CONTRACT. ANY INTENDING PURCHASER OR LESSEE SHOULD SATISFY THEMSELVES BY INSPECTION, SEARCHES, ENQUIRIES AND FULL SURVEY AS TO THE CORRECTNESS OF EACH STATEMENT. ANY AREAS, MEASUREMENTS OR DISTANCES QUOTED ARE APPROXIMATE AND SHOULD NOT BE USED TO VALUE A PROPERTY OR BE THE BASIS OF ANY SALE OR LET.

Notting Hill  
8 Ladbroke Grove, Notting Hill,  
London W11 3BG

Hyde Park  
37-41 Sussex Place, Hyde Park,  
London W2 2TH

South Kensington  
4-5 Kynance Place, South Kensington,  
London SW7 4QS

**WWW.LUROTBRAND.CO.UK**



Members of NAEA, ARLA, onthemarket.com. Lurot Brand (2) Limited T/A Lurot Brand. Registered in England No. 02035540. Registered Office: 37-41 Sussex Place, London, W2 2TH. VAT No. 629 099 505. [www.lurotbrand.co.uk](http://www.lurotbrand.co.uk)

---

We have produced these sales particulars as a general guide. We have not carried out a detailed survey of the property and have not tested the services, appliances, or specific fittings. Room sizes are for general guidance purposes and should not be relied upon for fitting carpets or furnishings. Pictures may have been digitally enhanced. Floor plans are not to scale. Fittings shown on floor plans may not match the actual layout or size of fittings at the property. None of the statements as to the property contained in these particulars are to be relied upon as statements or representations of fact. All statements in these particulars as to this property are made without responsibility on the part of Lurot Brand. The Seller does not make or give and neither Lurot Brand or any person in their employment has any authority to make or give any representation or warranty whatever in relation to this property.