



# Princes Gate Mews, SW7

**LUROT BRAND**

MEWS SPECIALISTS EST. 1971

020 7590 9955  
[lettings@lurotbrand.co.uk](mailto:lettings@lurotbrand.co.uk)



First Floor

Ground Floor



# Princes Gate Mews, SW7

Unfurnished

£1,500 PW

---

An immaculately presented and recently refurbished three-bedroom house in the most prestigious of South Kensington's mews.

A home flooded in natural light from eave to door mat with a spacious wooden-floored reception room and a practical, well-appointed, eat-in kitchen; this is a perfect family residence.

The culture-vulture will be exhausted and the shopaholic enthused at this highly desirable location.

## LOCATION

The house is tucked away in a quiet cul-del-sac Mews mere moments from the Victoria & Albert, Natural History and Science Museums. Likewise a very short distance lands you on Brompton Road or Sloane Street with all the high fashion bank-balance-busting shopping anyone could hope for! Easy access to the M4 and the West Country too!



Second Floor

Ground Floor





Second Floor

Second Floor



## FEATURES

Three Bedrooms	Master Bedroom with En
First Floor Reception Room	Suite
Large Study on Top Floor	Large Balcony
Double Bedroom with En	Suite

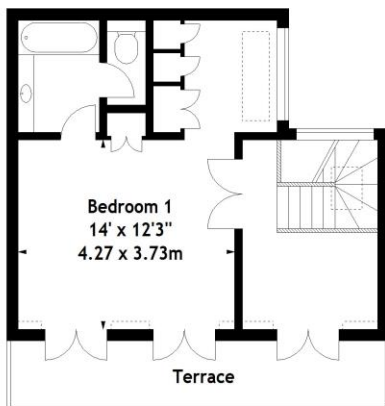
## OTHER USEFUL INFORMATION

EPC	C
Council Tax Band	F
Deposit Amount	£9,000.00

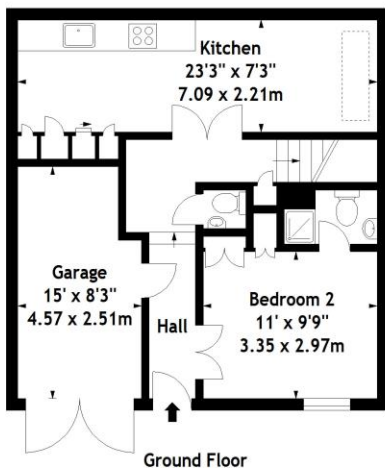
## NEAREST TUBE STATIONS

South Kensington (Circle, District & Piccadilly lines)

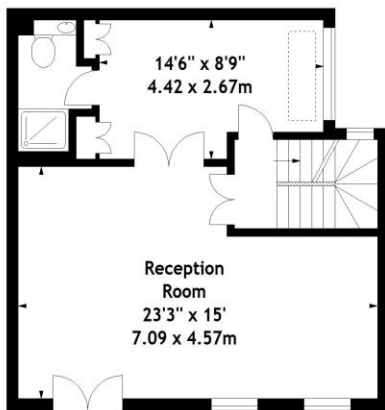
Princes Gate Mews, SW7  
Approx. Gross Internal Area  
1528 Sq Ft - 141.95 Sq M  
(Including Garage)



Second Floor



Ground Floor



First Floor

Measured in accordance with RICS guidelines. Every attempt is made to ensure accuracy, however all measurements are approximate. This floor plan is for illustrative purposes only and is not to scale.

© Datagraphy Ltd 2015  
Photographs \* Floorplans \* Virtual Tours  
Tel: 0845 643 4401 [www.datagraphy.com](http://www.datagraphy.com)

Hyde Park  
37-41 Sussex Place, Hyde Park,  
London W2 2TH

South Kensington  
4-5 Kynance Place, South Kensington,  
London SW7 4QS

**WWW.LUROTBRAND.CO.UK**



Members of NAEA, ARLA, onthemarket.com. Lurot Brand (2) Limited T/A Lurot Brand. Registered in England No. 02035540. Registered Office: 37-41 Sussex Place, London, W2 2TH. VAT No. 629 099 505. [www.lurotbrand.co.uk](http://www.lurotbrand.co.uk)

---

We have produced these sales particulars as a general guide. We have not carried out a detailed survey of the property and have not tested the services, appliances, or specific fittings. Room sizes are for general guidance purposes and should not be relied upon for fitting carpets or furnishings. Pictures may have been digitally enhanced. Floor plans are not to scale. Fittings shown on floor plans may not match the actual layout or size of fittings at the property. None of the statements as to the property contained in these particulars are to be relied upon as statements or representations of fact. All statements in these particulars as to this property are made without responsibility on the part of Lurot Brand. The Seller does not make or give and neither Lurot Brand or any person in their employment has any authority to make or give any representation or warranty whatever in relation to this property.