

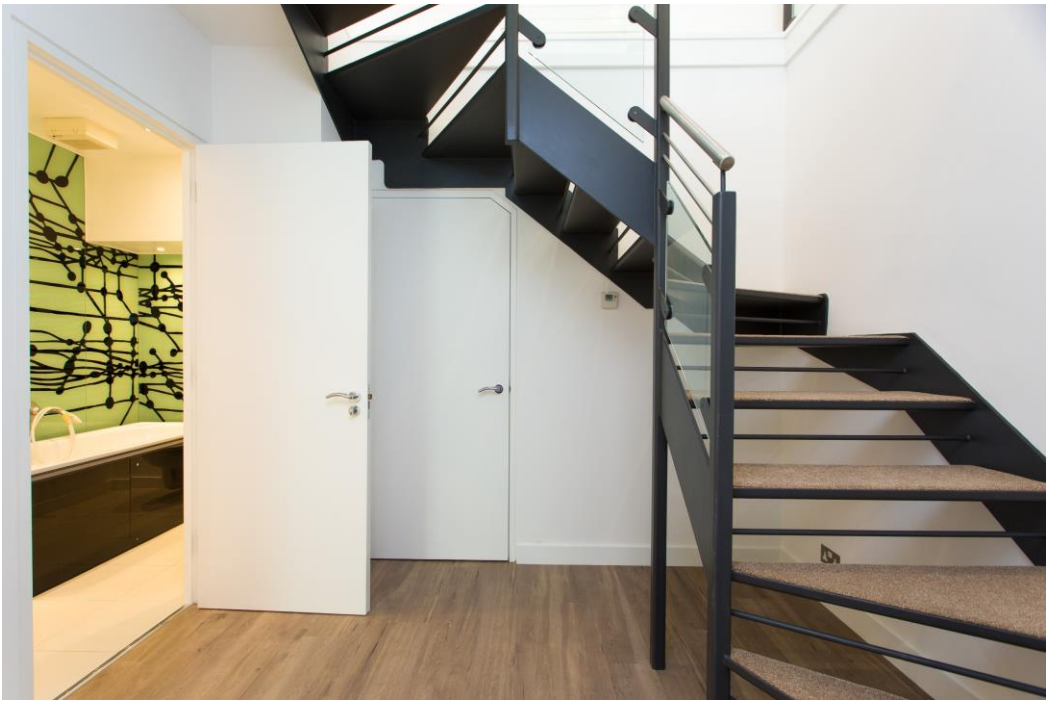


Dunworth Mews, W11

LUROT BRAND

MEWS SPECIALISTS EST. 1971

020 7590 9955
lettings@lurotbrand.co.uk



Ground Floor

First Floor



Dunworth Mews, W11

Unfurnished

£995 PW

Tucked away in a secure gated mews, this stylish, newly refurbished mews house offers a beautifully presented contemporary interior.

Moments from the bohemian chic of the world famous Portobello Road yet secluded enough to allow peace and quiet, this house has it all, perfect for a couple keen to enjoy the Notting Hill lifestyle, with the added benefit of a patio area ideal for al fresco dining! The property also benefits from a separate secure parking space.

LOCATION

Dunworth Mews runs east off the world-famous Portobello Road, ideally situated for all the boutiques, restaurants and transport facilities of Notting Hill Gate and Ladbroke Grove and of course, the well-known Portobello market.



First Floor

First Floor





Ground Floor

Ground Floor



FEATURES

Reception room with open-
plan kitchen

Master bedroom with en
suite wet room

Outside space as part of the

Second double bedroom

Bathroom

Secure parking

Recently repainted

communal gardens

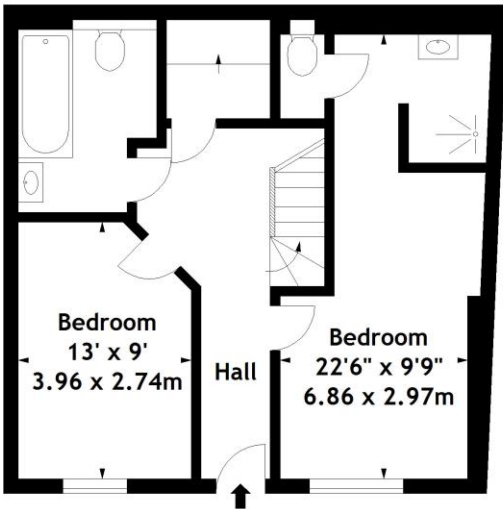
OTHER USEFUL INFORMATION

EPC	C
Council Tax Band	F
Deposit Amount	£5,970.00

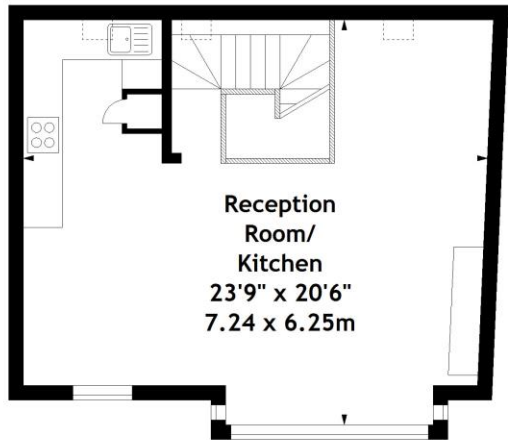
NEAREST TUBE STATIONS

Ladbroke Grove & Westbourne Park (Circle, Hammersmith &
City lines)

Dunworth Mews,
Notting Hill, W11
Approx. Gross Internal Area
987 Sq Ft - 91.69 Sq M



Ground Floor



First Floor

Measured in accordance with RICS guidelines. Every attempt is made to ensure accuracy, however all measurements are approximate. This floor plan is for illustrative purposes only and is not to scale.

© Datography Ltd 2016
Photographs * Floorplans * Virtual Tours
Tel: 0845 643 4401 www.datography.com

Hyde Park
37-41 Sussex Place, Hyde Park,
London W2 2TH

South Kensington
4-5 Kynance Place, South Kensington,
London SW7 4QS

WWW.LUROTBRAND.CO.UK



Members of NAEA, ARLA, onthemarket.com. Lurot Brand (2) Limited T/A Lurot Brand. Registered in England No. 02035540. Registered Office: 37-41 Sussex Place, London, W2 2TH. VAT No. 629 099 505. www.lurotbrand.co.uk

We have produced these sales particulars as a general guide. We have not carried out a detailed survey of the property and have not tested the services, appliances, or specific fittings. Room sizes are for general guidance purposes and should not be relied upon for fitting carpets or furnishings. Pictures may have been digitally enhanced. Floor plans are not to scale. Fittings shown on floor plans may not match the actual layout or size of fittings at the property. None of the statements as to the property contained in these particulars are to be relied upon as statements or representations of fact. All statements in these particulars as to this property are made without responsibility on the part of Lurot Brand. The Seller does not make or give and neither Lurot Brand or any person in their employment has any authority to make or give any representation or warranty whatever in relation to this property.