



Brook Mews North, W2

LUROT BRAND

MEWS SPECIALISTS EST. 1971

020 7590 9955
lettings@lurotbrand.co.uk



Ground Floor

Ground Floor



Brook Mews North, W2

Unfurnished

£950 PW

A contemporary loft-style mews apartment situated on the ground floor in this quite street with the added bonus of a private garage

This Central London spacious apartment boasts double-height ceilings, windows to front and rear and wood flooring throughout.

LOCATION

Brook Mews North is ideally situated for the extensive amenities of Paddington and Lancaster Gate. The green spaces of Kensington Gardens are a short walk away.



Ground Floor

External





Ground Floor

Ground Floor



FEATURES

Three Bedrooms

Large Reception

Open-Plan Kitchen

Secure Private Parking Space

Master Bedroom With En-suite

Conservatory

Wood Floors Throughout

OTHER USEFUL INFORMATION

EPC D

Council Tax Band G

Deposit Amount £4,750.00

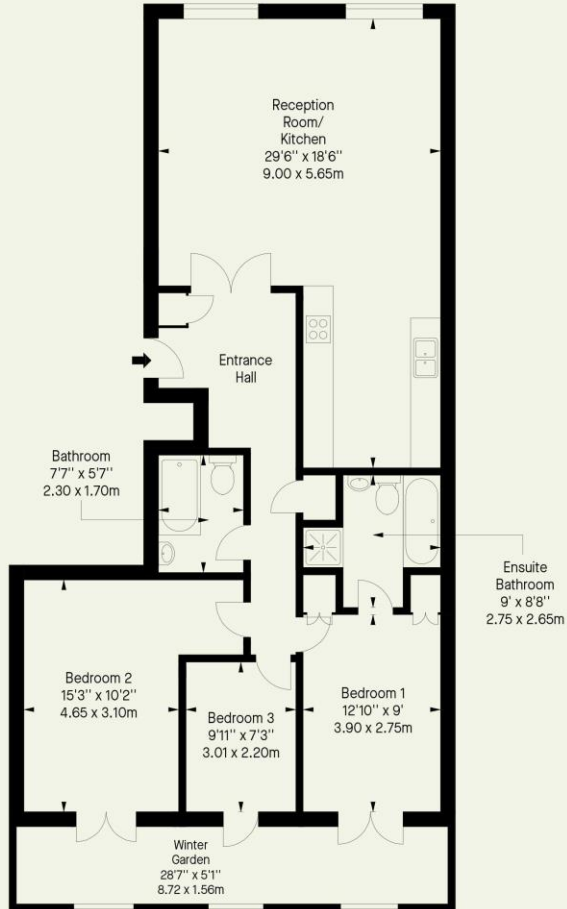
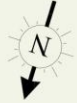
NEAREST TUBE STATIONS

Lancaster Gate (Central line)

Brook Mews North, W2

Approx. Gross Internal Area *
1088 Ft² - 101.08 M²

Approx. Gross Internal Area *
1259 Ft² - 116.96 M²
(Including Winter Garden)



Ground Floor

Whilst every attempt has been made to ensure the accuracy of the floor plan contained here, measurements of doors, windows, rooms and any other item are approximate and no responsibility is taken for any error, omission, or misstatement. Please check all dimensions before making a decision reliant upon them.

Hyde Park
37-41 Sussex Place, Hyde Park,
London W2 2TH

South Kensington
4-5 Kynance Place, South Kensington,
London SW7 4QS

WWW.LUROTBRAND.CO.UK



Members of NAEA, ARLA, onthemarket.com. Lurot Brand (2) Limited T/A Lurot Brand. Registered in England No. 02035540. Registered Office: 37-41 Sussex Place, London, W2 2TH. VAT No. 629 099 505. www.lurotbrand.co.uk

We have produced these sales particulars as a general guide. We have not carried out a detailed survey of the property and have not tested the services, appliances, or specific fittings. Room sizes are for general guidance purposes and should not be relied upon for fitting carpets or furnishings. Pictures may have been digitally enhanced. Floor plans are not to scale. Fittings shown on floor plans may not match the actual layout or size of fittings at the property. None of the statements as to the property contained in these particulars are to be relied upon as statements or representations of fact. All statements in these particulars as to this property are made without responsibility on the part of Lurot Brand. The Seller does not make or give and neither Lurot Brand or any person in their employment has any authority to make or give any representation or warranty whatever in relation to this property.