



Hesper Mews, SW5

LUROT BRAND

MEWS SPECIALISTS EST. 1971

020 7590 9955

lettings@lurotbrand.co.uk



Picture No. 06

Picture No. 11



Hesper Mews, SW5

Unfurnished

£1,260 PW

A beautiful family home with outside space in the heart of Earls Court.

This is quite possibly the ideal family home with plenty of reception space, good storage, new bath and shower rooms and eat-in kitchen/diner complete with secure parking and outside space! The double-aspect is an added bonus as it makes the property bright and airy too. All in all an excellent property in a pretty and desirable cobbled mews!

LOCATION

Hesper Mews is ideally situated for the extensive amenities of nearby Gloucester Road and Earls Court. Easy access to the West Country and Heathrow by road too.



Picture No. 09

Picture No. 20





Picture No. 18

Picture No. 12



FEATURES

Mews House

Reception Room

3 Bedrooms

Garage

4 bathrooms (2 En-Suite)

Decked Roof Terrace

Large Eat-in Kitchen

OTHER USEFUL INFORMATION

EPC

D

Council Tax Band

H

Deposit Amount

£7,560.00

NEAREST TUBE STATIONS

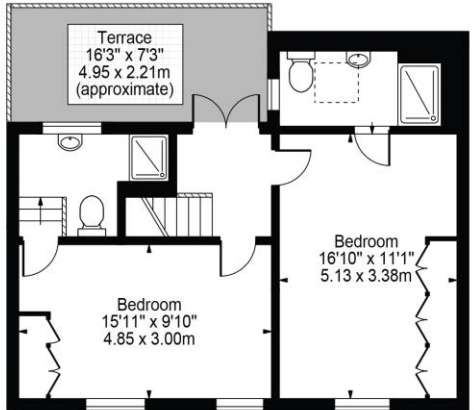
Earl's Court (Picadilly, District and Circle Line)

Hesper Mews

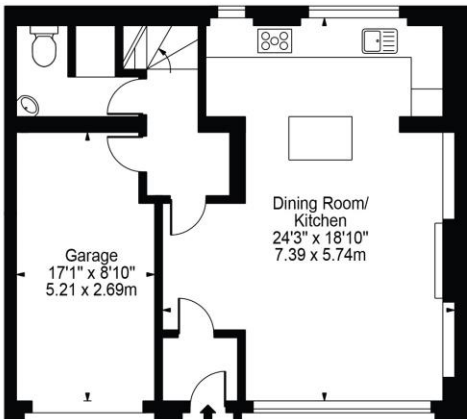
Approx. Total Internal Area 1845 Sq Ft - 171.41 Sq M

(Including Garage)

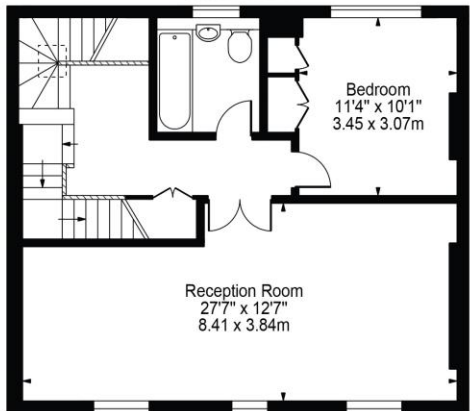
Approx. Gross Internal Area Of Garage 144 Sq Ft - 13.38 Sq M



Second Floor



Ground Floor



First Floor

For Illustration Purposes Only - Not To Scale

This floor plan should be used as a general outline for guidance only and does not constitute in whole or in part an offer or contract. Any intending purchaser or lessee should satisfy themselves by inspection, searches, enquiries and full survey as to the correctness of each statement. Any areas, measurements or distances quoted are approximate and should not be used to value a property or be the basis of any sale or let.

Notting Hill
8 Ladbroke Grove, Notting Hill,
London W11 3BG

Hyde Park
37-41 Sussex Place, Hyde Park,
London W2 2TH

South Kensington
4-5 Kynance Place, South Kensington,
London SW7 4QS

WWW.LUROTBRAND.CO.UK



Members of NAEA, ARLA, onthemarket.com. Lurot Brand (2) Limited T/A Lurot Brand. Registered in England No. 02035540. Registered Office: 37-41 Sussex Place, London, W2 2TH. VAT No. 629 099 505. www.lurotbrand.co.uk

We have produced these sales particulars as a general guide. We have not carried out a detailed survey of the property and have not tested the services, appliances, or specific fittings. Room sizes are for general guidance purposes and should not be relied upon for fitting carpets or furnishings. Pictures may have been digitally enhanced. Floor plans are not to scale. Fittings shown on floor plans may not match the actual layout or size of fittings at the property. None of the statements as to the property contained in these particulars are to be relied upon as statements or representations of fact. All statements in these particulars as to this property are made without responsibility on the part of Lurot Brand. The Seller does not make or give and neither Lurot Brand or any person in their employment has any authority to make or give any representation or warranty whatever in relation to this property.