



# Leinster Mews, W2

**LUROT BRAND**

MEWS SPECIALISTS EST. 1971

020 7590 9955

[lettings@lurotbrand.co.uk](mailto:lettings@lurotbrand.co.uk)



First Floor

Second Floor



# Leinster Mews, W2

Unfurnished

£1,325 PW

---

A wonderfully presented four-bedroom, three-storey house in a beautiful mews street.

The property is flooded with natural light in the well-proportioned rooms and benefits from a sizable garage in addition to the generous living space.

## LOCATION

Leinster Mews is perfectly situated for the leafy tranquillity of Kensington Palace Gardens and the excellent transport links of Queensway, Bayswater and Paddington.



Second Floor

First Floor





First Floor

Second Floor



## FEATURES

Four Bedrooms

---

Wooden Floors Throughout

---

Two Bathrooms

---

Garage

---

Open-Plan

---

Reception/Kitchen

---

## OTHER USEFUL INFORMATION

EPC

---

D

Council Tax Band

---

F

Deposit Amount

---

£7,950.00

---

## NEAREST TUBE STATIONS

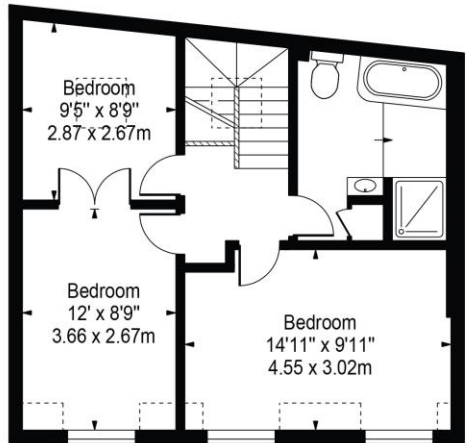
Lancaster Gate (Central line)

---

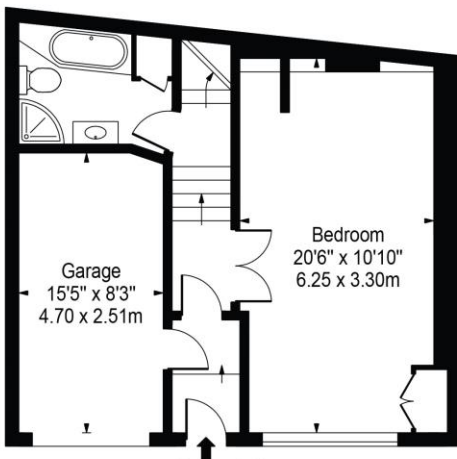
# Leinster Mews

Approx. Total Internal Area 1501 Sq Ft - 139.45 Sq M  
(Including Restricted Height Area & Garage)

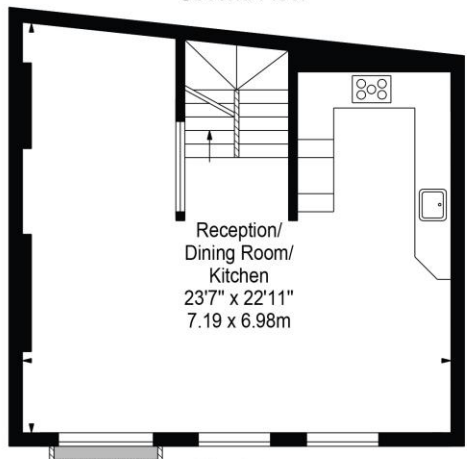
Approx. Gross Internal Area 1356 Sq Ft - 125.98 Sq M  
(Excluding Restricted Height Area & Garage)



Second Floor



Ground Floor



First Floor

For Illustration Purposes Only - Not To Scale

This floor plan should be used as a general outline for guidance only and does not constitute in whole or in part an offer or contract. Any intending purchaser or lessee should satisfy themselves by inspection, searches, enquiries and full survey as to the correctness of each statement. Any areas, measurements or distances quoted are approximate and should not be used to value a property or be the basis of any sale or let.

Notting Hill  
8 Ladbroke Grove, Notting Hill,  
London W11 3BG

Hyde Park  
37-41 Sussex Place, Hyde Park,  
London W2 2TH

South Kensington  
4-5 Kynance Place, South Kensington,  
London SW7 4QS

**WWW.LUROTBRAND.CO.UK**



Members of NAEA, ARLA, onthemarket.com. Lurot Brand (2) Limited T/A Lurot Brand. Registered in England No. 02035540. Registered Office: 37-41 Sussex Place, London, W2 2TH. VAT No. 629 099 505. [www.lurotbrand.co.uk](http://www.lurotbrand.co.uk)

---

We have produced these sales particulars as a general guide. We have not carried out a detailed survey of the property and have not tested the services, appliances, or specific fittings. Room sizes are for general guidance purposes and should not be relied upon for fitting carpets or furnishings. Pictures may have been digitally enhanced. Floor plans are not to scale. Fittings shown on floor plans may not match the actual layout or size of fittings at the property. None of the statements as to the property contained in these particulars are to be relied upon as statements or representations of fact. All statements in these particulars as to this property are made without responsibility on the part of Lurot Brand. The Seller does not make or give and neither Lurot Brand or any person in their employment has any authority to make or give any representation or warranty whatever in relation to this property.