



Gloucester Mews West, W2

LUROT BRAND

MEWS SPECIALISTS EST. 1971

020 7590 9955
sales@lurotbrand.co.uk



Lower Ground Floor

Lower Ground Floor



Gloucester Mews

West, W2

Freehold

£3,000,000 STC

A spacious and modern family home

A spacious and modern family home with well-appointed accommodation organised over four floors. A particular highlight is the kitchen/reception room with excellent ceiling heights, superb natural light and access to outside space. Great care has been taken with the design of the property from the wood floors, underfloor heating and air conditioning throughout to the feature staircases. There are three guest bedrooms, two of them suites. The master bedroom occupies the whole of the second floor and has a large ensuite bathroom.

LOCATION

Gloucester Mews West in Craven Village is in the heart of Bayswater. The area is characterised by its large open streets and stucco rendered Victorian mansion blocks. The area is popular for its local shops, cafes and restaurants as well as its proximity to Hyde Park and the excellent transport connections from Paddington.



Ground Floor

Lower Ground Floor





Second Floor

Second Floor



FEATURES

Air Conditioning	Study
Underfloor Heating	Four Bedrooms
Courtyard	Three En Suite Bathrooms
Large Kitchen/Dining Room	Family Bathroom

OTHER USEFUL INFORMATION

EPC	B
Council Tax Band	G

NEAREST TUBE STATIONS

Paddington (Hammersmith and City, Bakerloo, Circle, District lines & Heathrow Express) & Lancaster Gate (Central line)

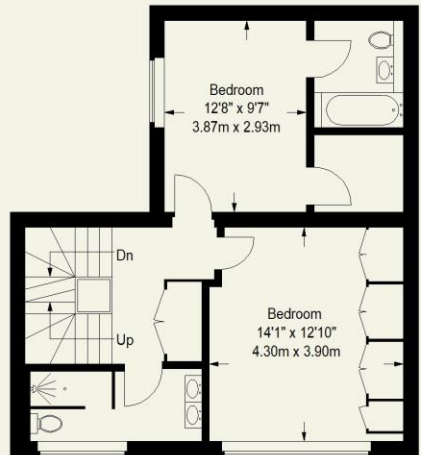
Gloucester Mews, W2

Approximate Gross Internal Area

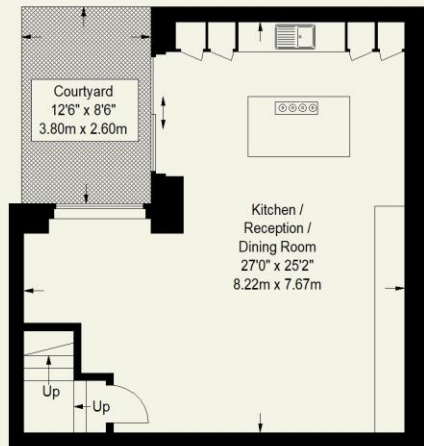
2144 FT² - 199.2 M²



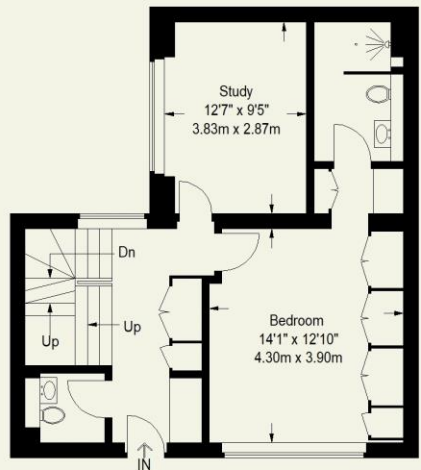
Second Floor



First Floor



Lower Ground Floor



Ground Floor

Whilst every attempt has been made to ensure the accuracy of the floorplan contained here, measurements of doors, windows, rooms and any other item are approximate and no responsibility is taken for any error, omission, or misstatement. This plan is for guidance only and must not be relied upon as a statement of fact. Attention is drawn to the important notice on the last page of the text in the particulars.

Hyde Park
37-41 Sussex Place, Hyde Park,
London W2 2TH

South Kensington
4-5 Kynance Place, South Kensington,
London SW7 4QS

WWW.LUROTBRAND.CO.UK



Members of NAEA, ARLA, onthemarket.com. Lurot Brand (2) Limited T/A Lurot Brand. Registered in England No. 02035540. Registered Office: 37-41 Sussex Place, London, W2 2TH. VAT No. 629 099 505. www.lurotbrand.co.uk

We have produced these sales particulars as a general guide. We have not carried out a detailed survey of the property and have not tested the services, appliances, or specific fittings. Room sizes are for general guidance purposes and should not be relied upon for fitting carpets or furnishings. Pictures may have been digitally enhanced. Floor plans are not to scale. Fittings shown on floor plans may not match the actual layout or size of fittings at the property. None of the statements as to the property contained in these particulars are to be relied upon as statements or representations of fact. Any reference to alterations to, or use of, any part of the property does not mean that any necessary planning, building regulations or other consent has been obtained. A buyer or lessee must find out by inspection or in other ways that these matters have been properly dealt with and that all information is correct.

All statements in these particulars as to this property are made without responsibility on the part of Lurot Brand. The Seller does not make or give and neither Lurot Brand or any person in their employment has any authority to make or give any representation or warranty whatever in relation to this property.