



Brook Mews North, W2

LUROT BRAND

MEWS SPECIALISTS EST. 1971

020 7590 9955

lettings@lurotbrand.co.uk



Ground Floor

Ground Floor



Brook Mews North, W2

Unfurnished

£825 PW

A rarely available two double bedroom loft style mews apartment moments from Hyde Park.

The apartment has been refurbished to the highest standard and includes hard wooden flooring throughout, exposed brick work and feature fireplace. The accommodation comprises a reception/dining room, modern kitchen, a utility room, principle bedroom with ample storage and an en-suite bathroom, second bedroom, with separate bathroom.

LOCATION

Brook Mews North is ideally situated for the extensive amenities of Paddington and Lancaster Gate. The green spaces of Kensington Gardens are a short walk away.



Ground Floor

Ground Floor





Ground Floor

Ground Floor



FEATURES

| | |
|------------------------|-------------------------|
| Ground Floor Mews Flat | Conservatory |
| 2 Bedrooms | Allocated parking/Gated |
| 2 Bathrooms | parking space |
| 1 Reception | Unfurnished |

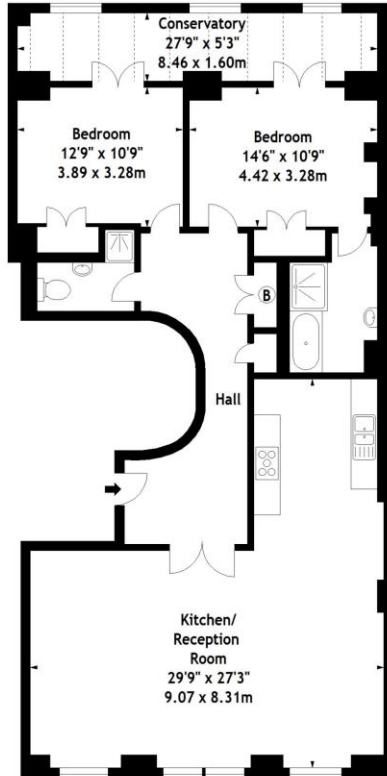
OTHER USEFUL INFORMATION

| | |
|------------------|-----------|
| EPC | C |
| Council Tax Band | G |
| Deposit Amount | £4,125.00 |

NEAREST TUBE STATIONS

Paddington Station (Heathrow Express, District and Circle line),
Marble Arch (Circle line) and Edgware Road (Bakerloo, District
and Circle line).

Brook Mews North, W2
Approx. Gross Internal Area
1375 Sq Ft - 127.74 Sq M



Ground Floor

Measured in accordance with RICS guidelines. Every attempt is made to ensure accuracy, however all measurements are approximate. This floor plan is for illustrative purposes only and is not to scale.
© Datography Ltd 2015
Photographs * Floorplans * Virtual Tours
Tel: 0845 643 4401 www.datography.com

Hyde Park
37-41 Sussex Place, Hyde Park,
London W2 2TH

South Kensington
4-5 Kynance Place, South Kensington,
London SW7 4QS

WWW.LUROTBRAND.CO.UK



Members of NAEA, ARLA, onthemarket.com. Lurot Brand (2) Limited T/A Lurot Brand. Registered in England No. 02035540. Registered Office: 37-41 Sussex Place, London, W2 2TH. VAT No. 629 099 505. www.lurotbrand.co.uk

We have produced these sales particulars as a general guide. We have not carried out a detailed survey of the property and have not tested the services, appliances, or specific fittings. Room sizes are for general guidance purposes and should not be relied upon for fitting carpets or furnishings. Pictures may have been digitally enhanced. Floor plans are not to scale. Fittings shown on floor plans may not match the actual layout or size of fittings at the property. None of the statements as to the property contained in these particulars are to be relied upon as statements or representations of fact. All statements in these particulars as to this property are made without responsibility on the part of Lurot Brand. The Seller does not make or give and neither Lurot Brand or any person in their employment has any authority to make or give any representation or warranty whatever in relation to this property.