



# Queen's Gate Mews, SW7

**LUROT BRAND**

MEWS SPECIALISTS EST. 1971

020 7590 9955  
[lettings@lurotbrand.co.uk](mailto:lettings@lurotbrand.co.uk)



Exterior

First Floor



# Queen's Gate Mews, SW7

Unfurnished

£807.69 PW

---

An attractive and well presented two bedroom house situated in this sought after South Kensington mews.

This two bedroom Mews house is located in a stunning cul-de-sac mews street.

The property boasts a kitchen on the ground floor, bright reception on the first floor and bathroom and two further bedrooms on the second floor, one with en-suite. The house is floored with natural lights and boasts its own private garage.

Long Let

Council Tax Band G

## LOCATION

Queens Gate Mews is ideally situated close to the many shops, restaurants and cafes of South Kensington with the green spaces of Kensington Gardens a short walk away.



First Floor

Ground Floor





First Floor

Ground Floor



## FEATURES

1st floor reception

---

Bathroom

---

Separate kitchen

---

En-suite shower room

---

Double bedroom

---

Garage

---

Single bedroom

---

## OTHER USEFUL INFORMATION

EPC

---

E

Council Tax Band

---

G

Deposit Amount

---

£4,038.45

---

## NEAREST TUBE STATIONS

Gloucester Road - Piccadilly Line, Circle & District Line

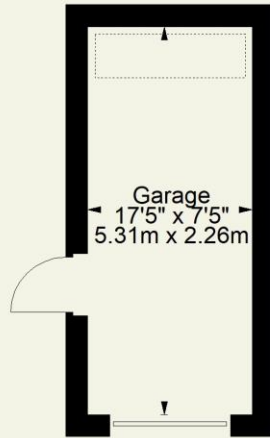
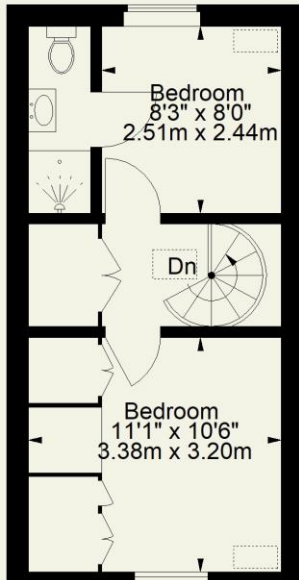
---

---

# Queens Gate Mews SW7


Approximate Gross Internal Area  
(Including Garage)

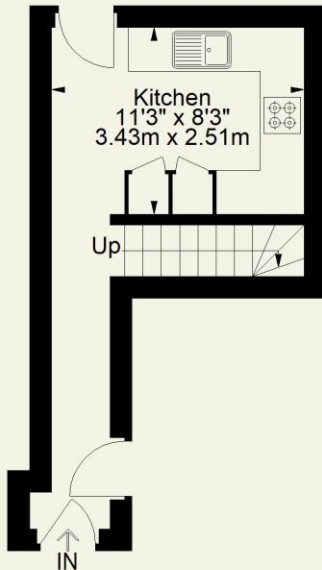
859 FT<sup>2</sup> - 79.8 M<sup>2</sup>



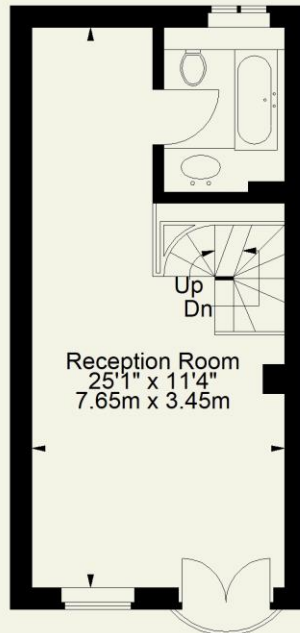
(Not Shown In Actual  
Location / Orientation)

Second Floor

 = Reduced headroom below 1.5 m / 5'0"



Ground Floor



First Floor

Notting Hill  
8 Ladbroke Grove, Notting Hill,  
London W11 3BG

Hyde Park  
37-41 Sussex Place, Hyde Park,  
London W2 2TH

South Kensington  
4-5 Kynance Place, South Kensington,  
London SW7 4QS

**WWW.LUROTBRAND.CO.UK**



Members of NAEA, ARLA, onthemarket.com. Lurot Brand (2) Limited T/A Lurot Brand. Registered in England No. 02035540. Registered Office: 37-41 Sussex Place, London, W2 2TH. VAT No. 629 099 505. [www.lurotbrand.co.uk](http://www.lurotbrand.co.uk)

---

We have produced these sales particulars as a general guide. We have not carried out a detailed survey of the property and have not tested the services, appliances, or specific fittings. Room sizes are for general guidance purposes and should not be relied upon for fitting carpets or furnishings. Pictures may have been digitally enhanced. Floor plans are not to scale. Fittings shown on floor plans may not match the actual layout or size of fittings at the property. None of the statements as to the property contained in these particulars are to be relied upon as statements or representations of fact. All statements in these particulars as to this property are made without responsibility on the part of Lurot Brand. The Seller does not make or give and neither Lurot Brand or any person in their employment has any authority to make or give any representation or warranty whatever in relation to this property.