



Devonport Mews, W12

LUROT BRAND

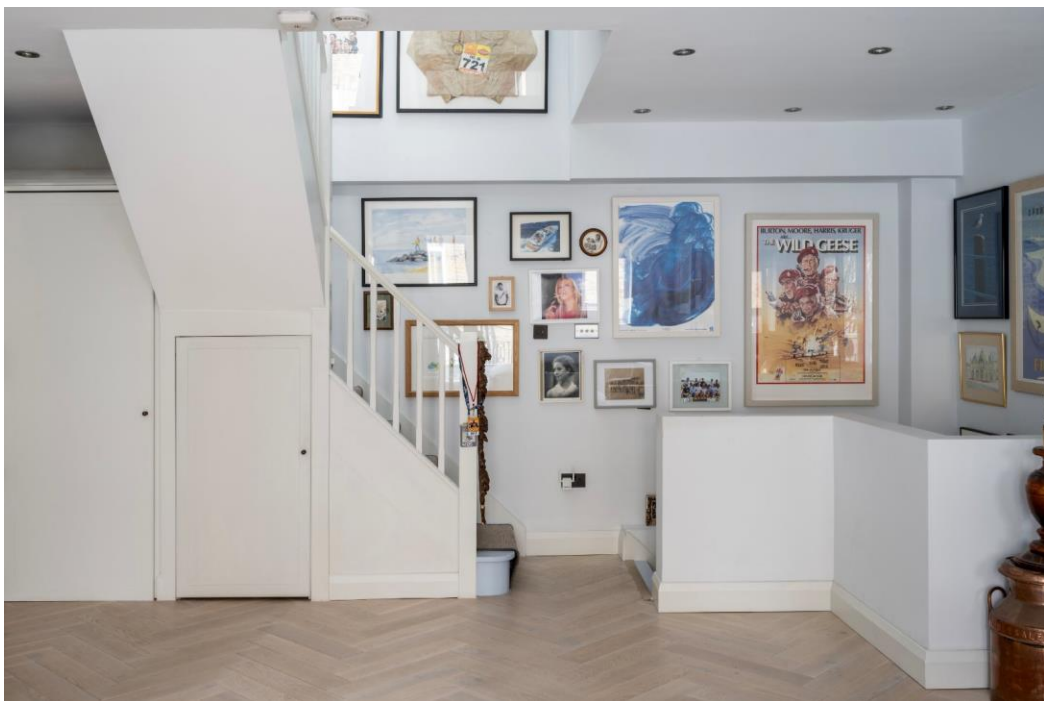
MEWS SPECIALISTS EST. 1971

020 7590 9955
sales@lurotbrand.co.uk



Ground Floor

First Floor



Devonport Mews, W12

Freehold

£1,275,000 STC

A superb two bed mews house in a gated and cobbled mews with excellent communications to central London.

This charming mews house has well organised accommodation arranged over three floors. On the ground floor is an open-plan kitchen and dining area with large bifold doors that open to the cobbled mews. The first floor is a large reception space with a Murphy folding wall bed, an office space and French doors that open to a wrought iron gallery along the mews. On the second floor, you'll find the master and guest bedroom suites and a staircase that leads to a flat roof. The house also benefits from an off-street parking space.

LOCATION

Devonport Mews is located in Shepherd's Bush with a diverse array of local restaurants and shops, complemented by the renowned Westfield—one of the largest shopping centres in Europe—offering fashion brands, various dining choices, and exclusive boutiques. There is easy access to the heart of London and beyond, with Shepherd's Bush tube station and Goldhawk Road station nearby.



First Floor

Second Floor





Second Floor

Second Floor



FEATURES

Open Plan Kitchen/Reception	Two En Suite Bathrooms
Second Reception Room	Balcony
Two Bedrooms	Off Street Parking

OTHER USEFUL INFORMATION

EPC	C
Council Tax Band	F


NEAREST TUBE STATIONS

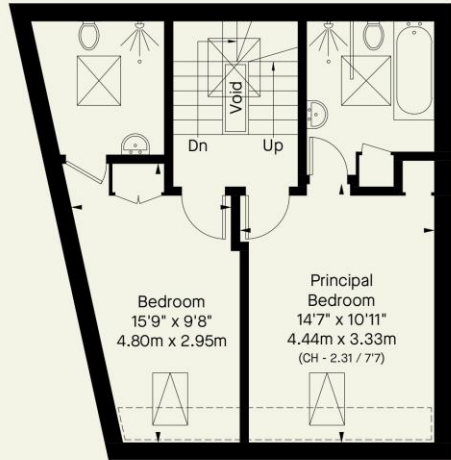
Shepherd's Bush Market & Goldhawk Road (Circle and Hammersmith & City lines)
--

Devonport Mews, W12

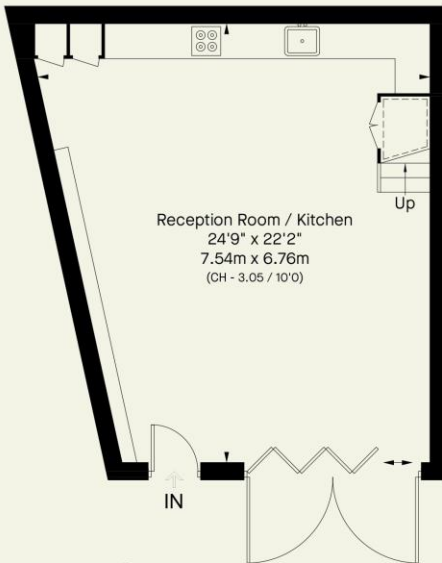
Approximate Gross Internal Area
1484 FT² - 137.9 M²



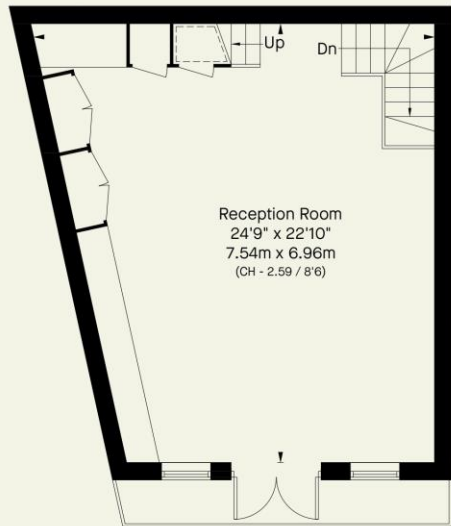
 = Reduced headroom below 1.5m / 5'0



Second Floor



Ground Floor



First Floor

Whilst every attempt has been made to ensure the accuracy of the floorplan contained here, measurements of doors, windows, rooms and any other item are approximate and no responsibility is taken for any error, omission, or misstatement. This plan is for guidance only and must not be relied upon as a statement of fact. Attention is drawn to the important notice on the last page of the text in the particulars.

Notting Hill
8 Ladbroke Grove, Notting Hill,
London W11 3BG

Hyde Park
37-41 Sussex Place, Hyde Park,
London W2 2TH

South Kensington
4-5 Kynance Place, South Kensington,
London SW7 4QS

WWW.LUROTBRAND.CO.UK



Members of NAEA, ARLA, onthemarket.com. Lurot Brand (2) Limited T/A Lurot Brand. Registered in England No. 02035540. Registered Office: 37-41 Sussex Place, London, W2 2TH. VAT No. 629 099 505. www.lurotbrand.co.uk

We have produced these sales particulars as a general guide. We have not carried out a detailed survey of the property and have not tested the services, appliances, or specific fittings. Room sizes are for general guidance purposes and should not be relied upon for fitting carpets or furnishings. Pictures may have been digitally enhanced. Floor plans are not to scale. Fittings shown on floor plans may not match the actual layout or size of fittings at the property. None of the statements as to the property contained in these particulars are to be relied upon as statements or representations of fact. Any reference to alterations to, or use of, any part of the property does not mean that any necessary planning, building regulations or other consent has been obtained. A buyer or lessee must find out by inspection or in other ways that these matters have been properly dealt with and that all information is correct.

All statements in these particulars as to this property are made without responsibility on the part of Lurot Brand. The Seller does not make or give and neither Lurot Brand or any person in their employment has any authority to make or give any representation or warranty whatever in relation to this property.