



Denbigh Close, W11

LUROT BRAND

MEWS SPECIALISTS EST. 1971

020 7590 9955

lettings@lurotbrand.co.uk



Ground Floor

Exterior



Denbigh Close, W11

Furnished, Unfurnished

£2,300 PW

A beautifully remodelled three bedroom mews house located in the heart of Notting Hill.

Recently refurbished to an exacting standard throughout, this stunning mews home includes three generous double bedrooms all with en-suite bath and shower rooms. A first floor reception room includes a designated dining area and separate contemporary kitchen, the master bedroom suite has direct access to a south facing roof terrace, there is even a home gym included on the lower ground floor.

LOCATION

Located close to the Westbourne Grove end of Portobello Road in the area of Notting Hill, Denbigh Close runs off the prettiest part of Portobello Market, highly instagramable and movie location favourite! A dream location with dozens of amazing shops, cafes & bars on your doorstep.



Lower Ground Floor

Second Floor





First Floor

Second Floor



FEATURES

Three Bedrooms

Roof Terrace

Two Reception Rooms

Resident Parking

Four Bathrooms

Gym

1,829 Sq Ft

Separate Laundry Room

OTHER USEFUL INFORMATION

EPC

D

Council Tax Band

G

Deposit Amount

£13,800.00

NEAREST TUBE STATIONS

Notting Hill Gate (Central and Circle and District lines)

Denbigh Close, W11

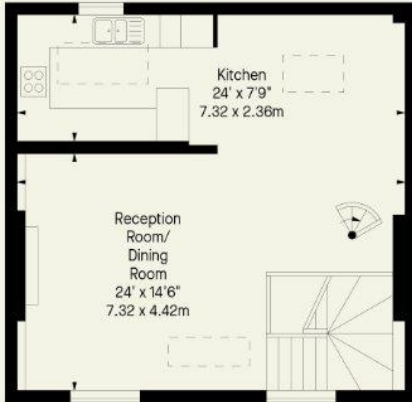
Approx. Gross Internal Area *

1845 Ft² - 171.40 M²

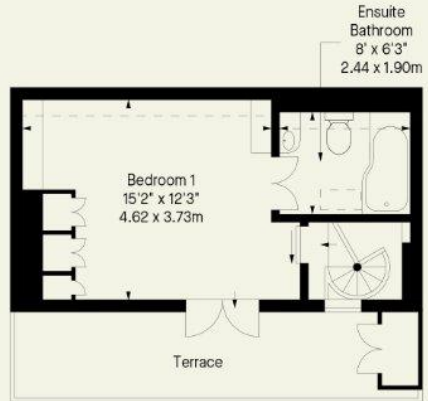
Approx. Gross Internal Area *

1975 Ft² - 183.48 M²

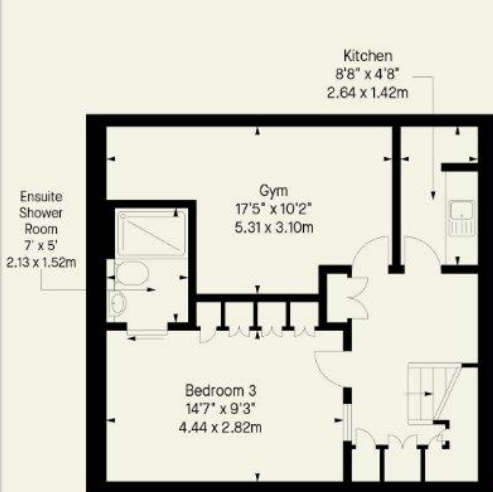
(Including Terrace)



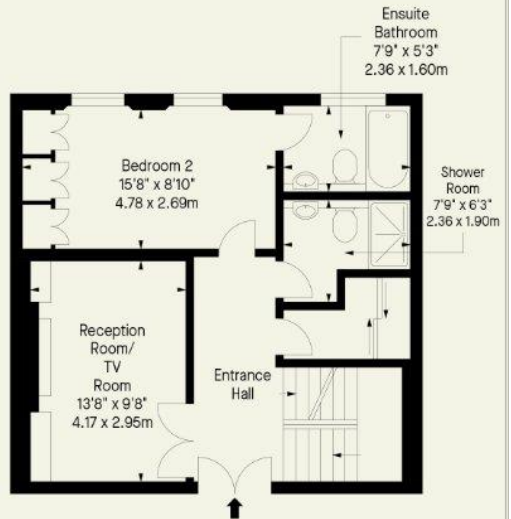
First Floor



Second Floor



Lower Ground Floor



Ground Floor

Hyde Park
37-41 Sussex Place, Hyde Park,
London W2 2TH

South Kensington
4-5 Kynance Place, South Kensington,
London SW7 4QS

WWW.LUROTBRAND.CO.UK



Members of NAEA, ARLA, onthemarket.com. Lurot Brand (2) Limited T/A Lurot Brand. Registered in England No. 02035540. Registered Office: 37-41 Sussex Place, London, W2 2TH. VAT No. 629 099 505. www.lurotbrand.co.uk

We have produced these sales particulars as a general guide. We have not carried out a detailed survey of the property and have not tested the services, appliances, or specific fittings. Room sizes are for general guidance purposes and should not be relied upon for fitting carpets or furnishings. Pictures may have been digitally enhanced. Floor plans are not to scale. Fittings shown on floor plans may not match the actual layout or size of fittings at the property. None of the statements as to the property contained in these particulars are to be relied upon as statements or representations of fact. All statements in these particulars as to this property are made without responsibility on the part of Lurot Brand. The Seller does not make or give and neither Lurot Brand or any person in their employment has any authority to make or give any representation or warranty whatever in relation to this property.