



Pont Street Mews, SW1X

LUROT BRAND

MEWS SPECIALISTS EST. 1971

020 7590 9955
lettings@lurotbrand.co.uk



External

First Floor



Pont Street Mews, SW1X

Unfurnished

£2,100 PW

A charming mews house located in one of the most sought after private mews streets in London.

The idyllic house comprises of a master bedroom with en-suite bathroom, three further double bedrooms, two bathrooms (one en-suite), one shower room (en-suite), guest cloakroom. The house boasts a large kitchen dining room and separate utility room. This stunning property further benefits from high ceilings and parking for two cars, outside of the mews and a private garage. Pont Street Mews has the added benefit of a security barrier situated on the Eastern end of Walton Street.

LOCATION

This prime location situated close to Harrods and the local amenities and designer shops along Brompton road and Sloan Street. Walking distance to the wide open spaces of Hyde Park. Both the V&A and the Science Museum are easily accessed as well as Imperial College.



Street

Second Floor





First Floor

Second Floor



FEATURES

4 Bedrooms	Separate utility room
3 Bathrooms	
Garage	
Private Mews	

OTHER USEFUL INFORMATION

EPC	D
Council Tax Band	H
Deposit Amount	£12,600.00

NEAREST TUBE STATIONS

Knightsbridge underground station (Piccadilly line) and Sloane Square underground station (District and Circle lines)

Pont Street Mews, SW1X

Approximate Gross Internal Area

2515 FT² - 233.7 M²

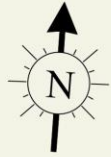
Eaves Storage

38 FT² - 3.5 M²

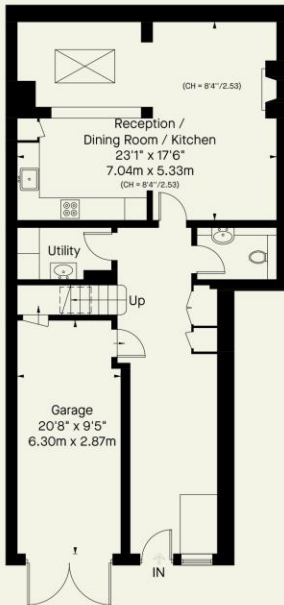
Total

2553 FT² - 237.2 M²

Including Limited Use Area (10 FT² - 0.9 M²)



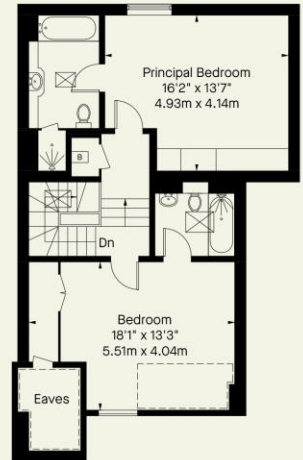
 = Reduced head height below 1.5m



Ground Floor



First Floor



Second Floor

Hyde Park
37-41 Sussex Place, Hyde Park,
London W2 2TH

South Kensington
4-5 Kynance Place, South Kensington,
London SW7 4QS

WWW.LUROTBRAND.CO.UK



Members of NAEA, ARLA, onthemarket.com. Lurot Brand (2) Limited T/A Lurot Brand. Registered in England No. 02035540. Registered Office: 37-41 Sussex Place, London, W2 2TH. VAT No. 629 099 505. www.lurotbrand.co.uk

We have produced these sales particulars as a general guide. We have not carried out a detailed survey of the property and have not tested the services, appliances, or specific fittings. Room sizes are for general guidance purposes and should not be relied upon for fitting carpets or furnishings. Pictures may have been digitally enhanced. Floor plans are not to scale. Fittings shown on floor plans may not match the actual layout or size of fittings at the property. None of the statements as to the property contained in these particulars are to be relied upon as statements or representations of fact. All statements in these particulars as to this property are made without responsibility on the part of Lurot Brand. The Seller does not make or give and neither Lurot Brand or any person in their employment has any authority to make or give any representation or warranty whatever in relation to this property.