



Queensdale Walk, W11

LUROT BRAND

MEWS SPECIALISTS EST. 1971

020 7590 9955
lettings@lurotbrand.co.uk



Ground Floor

Garden



Queensdale Walk, W11

Furnished

£1,150 PW

A beautifully kept two-bedroom house in the highly desirable Queensdale Walk.

This property is arranged over two floors and offers more than 1,000 square feet of living space. The ground floor boasts a large living area with galley kitchen and separate dining space, both of which have direct access to a private patio garden. The house offers floor to ceiling windows on the ground floor which offers an abundance of natural light.

The top floor of the property offers a master bedroom which has direct access to a very modern en-suite bathroom as well as a second shower room. The house has great storage, is soundproofed and has integrated speaker system throughout.

LOCATION

Queensdale Walk is a beautifully well-maintained cul-de-sac located in the heart of Holland Park. The property is located a short walk from the local cafes and shops the area has to offer as well as being a short walk from Holland Park tube station.



First Floor

Ground Floor





Ground Floor

Ground Floor



FEATURES

Master Bedroom with En Suite	Kitchen/Dining Room
Second Bedroom	Shower Room
Large Reception Room	Garden Patio
	Air Con

OTHER USEFUL INFORMATION

EPC	D
Council Tax Band	G
Deposit Amount	£6,900.00

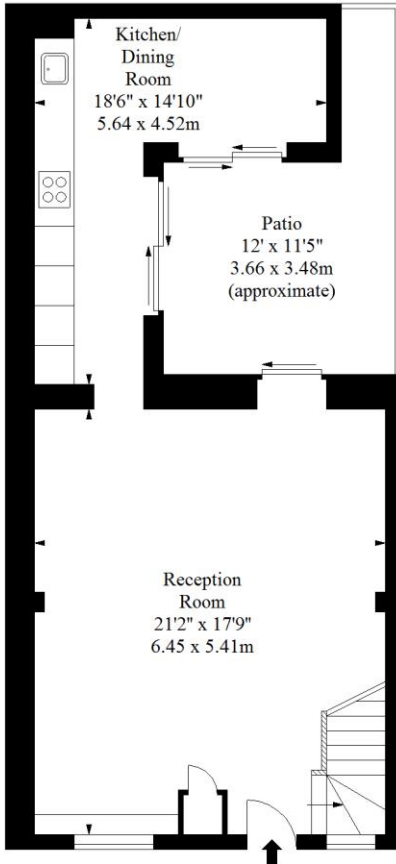
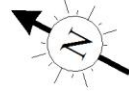
NEAREST TUBE STATIONS

Shepherd's Bush & Holland Park (Overground and Central line)

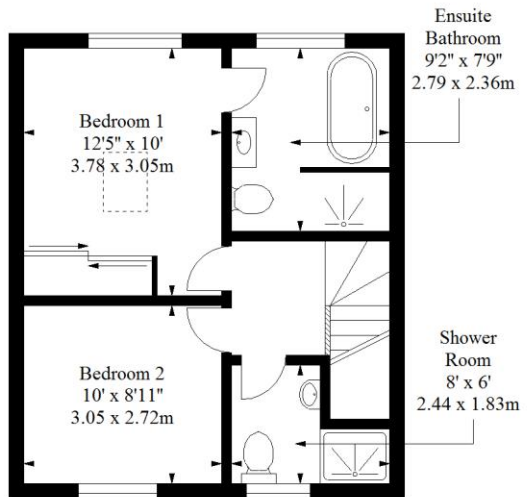
Queensdale Walk, W11

Approx. Gross Internal Area *
970 Ft² - 90.11 M²

Approx. Gross Internal Area *
1118 Ft² - 103.86 M²
(Including Patio)



Ground Floor



First Floor



Illustration For Identification Purposes Only. Not To Scale

* As Defined by RICS - Code of Measuring Practice

© International Floorplans.

Tel 0094 115 345958

www.ifplk

Hyde Park
37-41 Sussex Place, Hyde Park,
London W2 2TH

South Kensington
4-5 Kynance Place, South Kensington,
London SW7 4QS

WWW.LUROTBRAND.CO.UK



Members of NAEA, ARLA, onthemarket.com. Lurot Brand (2) Limited T/A Lurot Brand. Registered in England No. 02035540. Registered Office: 37-41 Sussex Place, London, W2 2TH. VAT No. 629 099 505. www.lurotbrand.co.uk

We have produced these sales particulars as a general guide. We have not carried out a detailed survey of the property and have not tested the services, appliances, or specific fittings. Room sizes are for general guidance purposes and should not be relied upon for fitting carpets or furnishings. Pictures may have been digitally enhanced. Floor plans are not to scale. Fittings shown on floor plans may not match the actual layout or size of fittings at the property. None of the statements as to the property contained in these particulars are to be relied upon as statements or representations of fact. All statements in these particulars as to this property are made without responsibility on the part of Lurot Brand. The Seller does not make or give and neither Lurot Brand or any person in their employment has any authority to make or give any representation or warranty whatever in relation to this property.