



Comeragh Mews, W14

LUROT BRAND

MEWS SPECIALISTS EST. 1971

020 7590 9955
sales@lurotbrand.co.uk



Ground Floor

First Floor



Comeragh Mews, W14

Freehold

£1,200,000 STC

A charming two bedroom mews house with a large roof terrace, located at walking distance from Queen's Club.

A property which has undergone tasteful modernisation throughout. The ground floor has a large entrance hall with convenient storage, a guest bedroom and a separate shower room. The first floor boasts a modern open plan kitchen and living room, that is full of charm and natural light. The second floor hosts the large main bedroom with modern ensuite, and plenty of storage. The property also has a large roof terrace.

LOCATION

The property is located at walking distance from West Kensington and Barons Court tube station (District & Piccadilly line) and the historic Queen's Tennis Club.



First Floor

Second Floor





Roof Terrace

Ground Floor



FEATURES

Two Bedrooms

Shower Room

Kitchen/Reception Room

Entrance Hall

En Suite Bathroom

Roof Terrace

OTHER USEFUL INFORMATION

EPC

D

Council Tax Band

F

NEAREST TUBE STATIONS

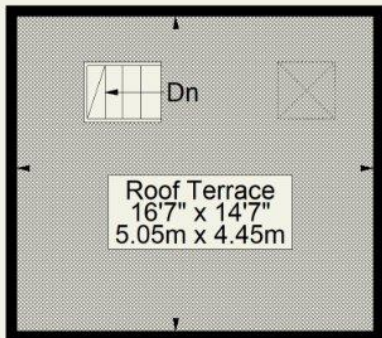
West Kensington and Barons Court (District & Piccadilly line)

Comeragh Mews W14

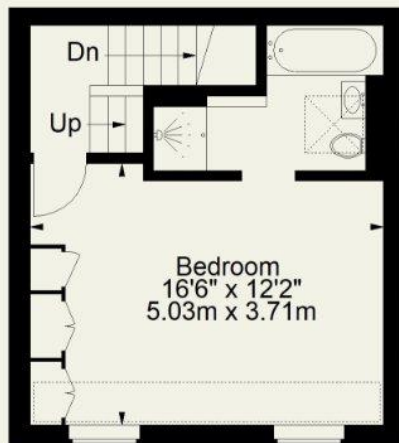
Approximate Gross Internal Area
939 FT² - 87.2 M²



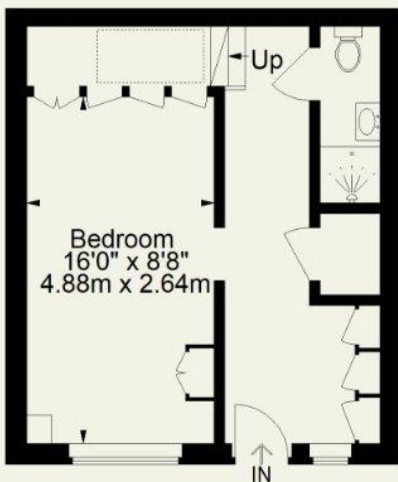
 = Reduced headroom below 1.5 m / 5'0"



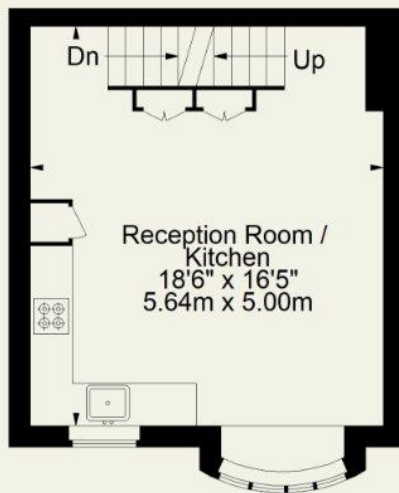
Third Floor



Second Floor



Ground Floor



First Floor

Whilst every attempt has been made to ensure the accuracy of the floorplan contained here, measurements of doors, windows, rooms and any other item are approximate and no responsibility is taken for any error, omission, or misstatement. This plan is for guidance only and must not be relied upon as a statement of fact. Attention is drawn to the important notice on the last page of the text in the particulars.

Hyde Park
37-41 Sussex Place, Hyde Park,
London W2 2TH

South Kensington
4-5 Kynance Place, South Kensington,
London SW7 4QS

WWW.LUROTBRAND.CO.UK



Members of NAEA, ARLA, onthemarket.com. Lurot Brand (2) Limited T/A Lurot Brand. Registered in England No. 02035540. Registered Office: 37-41 Sussex Place, London, W2 2TH. VAT No. 629 099 505. www.lurotbrand.co.uk

We have produced these sales particulars as a general guide. We have not carried out a detailed survey of the property and have not tested the services, appliances, or specific fittings. Room sizes are for general guidance purposes and should not be relied upon for fitting carpets or furnishings. Pictures may have been digitally enhanced. Floor plans are not to scale. Fittings shown on floor plans may not match the actual layout or size of fittings at the property. None of the statements as to the property contained in these particulars are to be relied upon as statements or representations of fact. Any reference to alterations to, or use of, any part of the property does not mean that any necessary planning, building regulations or other consent has been obtained. A buyer or lessee must find out by inspection or in other ways that these matters have been properly dealt with and that all information is correct.

All statements in these particulars as to this property are made without responsibility on the part of Lurot Brand. The Seller does not make or give and neither Lurot Brand or any person in their employment has any authority to make or give any representation or warranty whatever in relation to this property.