



# Archery Close, W2

**LUROT BRAND**

MEWS SPECIALISTS EST. 1971

020 7590 9955  
sales@lurotbrand.co.uk



External

First Floor



# Archery Close, W2

Freehold

£2,300,000 STC

---

A wonderful freehold mews house located in a pretty, cobbled mews in the heart of Connaught Village.

This house presents beautifully throughout with an abundance of natural light due to its dual aspect, rare amongst mews houses. The kitchen and reception areas are found over the ground and first floor and enjoy stunning views to the rear over St George's Fields. Both bedrooms are generous in size, have ensuite bathrooms as well as built in storage.

## LOCATION

Archery Close is a very pretty, cobbled mews in Connaught Village that has an extensive range of fine boutiques and shops. The green spaces of Hyde Park are a short stroll away.



Ground Floor

Lower Ground







Lower Ground

Second Floor



## FEATURES

Kitchen/Dining Room

---

Two Bedrooms

---

Reception Room

---

Two Bathrooms

---

## OTHER USEFUL INFORMATION

EPC

---

E

Council Tax Band

---

G

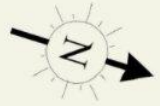
## NEAREST TUBE STATIONS

Marble Arch (Central line) and Paddington (Elizabeth, Circle,  
Hammersmith and City, Bakerloo and District lines)

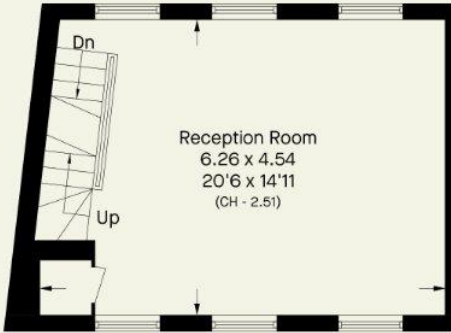
---

# Archery Close, W2

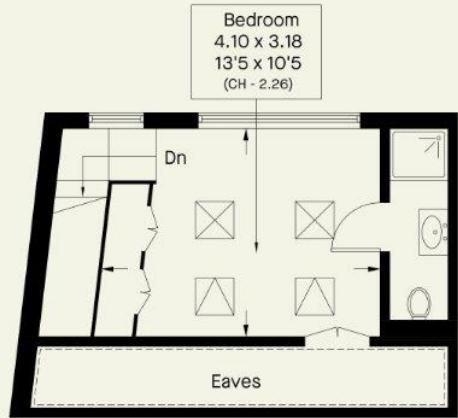
Approximate Area = 107.6 sq m / 1158 sq ft  
Including Limited Use Area / Eaves (8.1 sq m / 87 sq ft)



 = Reduce head height below 1.5m



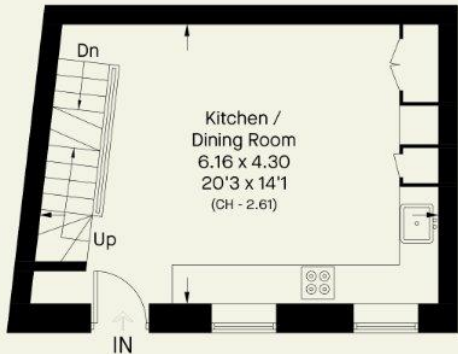
First Floor



Second Floor



Lower Ground Floor



Ground Floor

Whilst every attempt has been made to ensure the accuracy of the floor plan contained here, measurements of doors, windows, rooms and any other item are approximate and no responsibility is taken for any error, omission, or misstatement. Please check all dimensions before making a decision reliant upon them.

Hyde Park  
37-41 Sussex Place, Hyde Park,  
London W2 2TH

South Kensington  
4-5 Kynance Place, South Kensington,  
London SW7 4QS

**WWW.LUROTBRAND.CO.UK**



Members of NAEA, ARLA, onthemarket.com. Lurot Brand (2) Limited T/A Lurot Brand. Registered in England No. 02035540. Registered Office: 37-41 Sussex Place, London, W2 2TH. VAT No. 629 099 505. [www.lurotbrand.co.uk](http://www.lurotbrand.co.uk)

We have produced these sales particulars as a general guide. We have not carried out a detailed survey of the property and have not tested the services, appliances, or specific fittings. Room sizes are for general guidance purposes and should not be relied upon for fitting carpets or furnishings. Pictures may have been digitally enhanced. Floor plans are not to scale. Fittings shown on floor plans may not match the actual layout or size of fittings at the property. None of the statements as to the property contained in these particulars are to be relied upon as statements or representations of fact. Any reference to alterations to, or use of, any part of the property does not mean that any necessary planning, building regulations or other consent has been obtained. A buyer or lessee must find out by inspection or in other ways that these matters have been properly dealt with and that all information is correct.

All statements in these particulars as to this property are made without responsibility on the part of Lurot Brand. The Seller does not make or give and neither Lurot Brand or any person in their employment has any authority to make or give any representation or warranty whatever in relation to this property.