



Bathurst Mews, W2

LUROT BRAND

MEWS SPECIALISTS EST. 1971

020 7590 9955
sales@lurotbrand.c.co.uk



Bathurst Mews, W2

Freehold

£3,750,000 STC

This wonderful mews house is a perfect example of why so many are attracted to mews living.

Despite being located moments from one of London's most useful transport hubs, one feels as though they are in a countryside village. The outlook from the house, on to Bathurst Mews, is unrivalled, given the direct and uninterrupted views of the multi-time winner of 'Mews in Bloom'. The house itself benefits from an abundance of natural light, filling every inch of the spacious, open living spaces. With three generous en-suite bedrooms, and a fourth should it be required, the house lends itself to a wide range of uses, whilst the neutral décor throughout will allow any new owner to easily add their own personal touches. The build quality is superb, with every detail having been meticulously considered. It is rare to find a house of this standard in such a sought-after location.

LOCATION

Bathurst Mews is one of the prettiest mews streets in London and is found between Sussex Gardens and Sussex Square. Hyde Park is only moments away whilst Kensington Gardens are within walking distance. There are also excellent transport links from Paddington Station (Elizabeth Line/Crossrail under construction) and Lancaster Gate.





FEATURES

Kitchen/Dining Room,

Utility Room

Family Bathroom,

Two Reception Rooms

Four Bedrooms With Two En-Suite Bathrooms

Shower Room

OTHER USEFUL INFORMATION

EPC

C

Council Tax Band

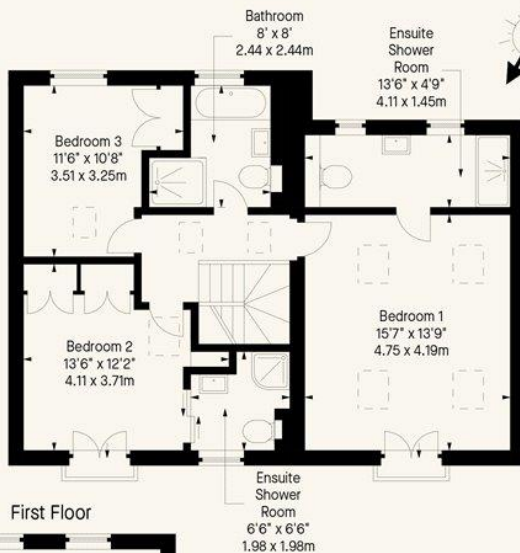
G

NEAREST TUBE STATIONS

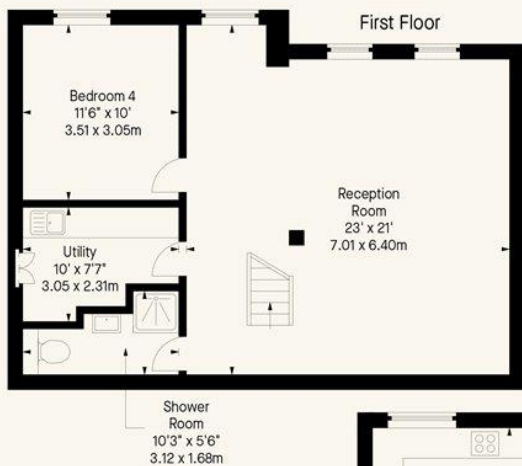
Lancaster Gate (Central Line)

Paddington (Circle, District and Mainline Services)

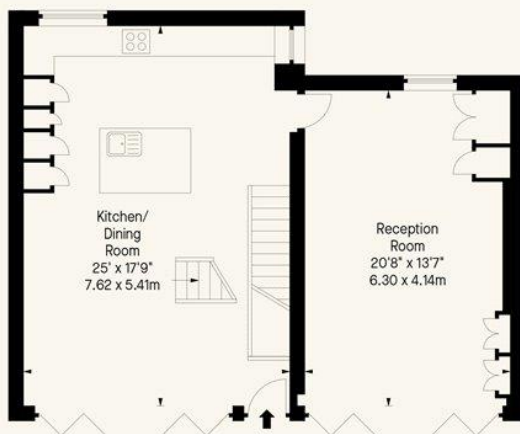
Bathurst Mews, W2
Approx. Gross Internal Area *
2161 Ft² - 200.76 M²



First Floor



Lower Ground Floor



Ground Floor

Notting Hill
8 Ladbroke Grove, Notting Hill,
London W11 3BG

Hyde Park
37-41 Sussex Place, Hyde Park,
London W2 2TH

South Kensington
4-5 Kynance Place, South Kensington,
London SW7 4QS

WWW.LUROTBRAND.CO.UK

Members of NAEA, ARLA, onthemarket.com. Lurot Brand (2) Limited T/A Lurot Brand. Registered in England No. 02035540. Registered Office: 37-41 Sussex Place, London, W2 2TH. VAT No. 629 099 505. www.lurotbrand.co.uk

N.B. This company name will change back to Lurot Brand Limited within the next 6 months. We have produced these sales particulars as a general guide. We have not carried out a detailed survey of the property and have not tested the services, appliances, or specific fittings. Room sizes are for general guidance purposes and should not be relied upon for fitting carpets or furnishings. Pictures may have been digitally enhanced. Floor plans are not to scale. Fittings shown on floor plans may not match the actual layout or size of fittings at the property. None of the statements as to the property contained in these particulars are to be relied upon as statements or representations of fact. All statements in these particulars as to this property are made without responsibility on the part of Lurot Brand. The Seller does not make or give and neither Lurot Brand or any person in their employment has any authority to make or give any representation or warranty whatever in relation to this property.