



Bathurst Mews, W2

LUROT BRAND

MEWS SPECIALISTS EST. 1971

020 7590 9955
sales@lurotbrand.co.uk



Kitchen Dining

Sitting



Bathurst Mews, W2

Freehold

£3,750,000 STC

This wonderful four bedroom mews house is a perfect example of why so many are attracted to mews living.

Despite being located moments from one of London's most useful transport hubs, one feels as though they are in a countryside village. The outlook from the house, onto Bathurst Mews, is unrivalled, given the direct and uninterrupted views of the multi-time winner of 'Mews in Bloom'. The house itself benefits from an abundance of natural light, filling every inch of the spacious, open living spaces. With three generous en-suite bedrooms, and a fourth should it be required, the house lends itself to a wide range of uses, whilst the neutral décor throughout will allow any new owner to easily add their own personal touches. The build quality is superb, with every detail having been meticulously considered. It is rare to find a house of this standard in such a sought-after location.

LOCATION

Bathurst Mews is one of the prettiest mews streets in London and is found between Sussex Gardens and Sussex Square. Hyde Park is only moments away whilst Kensington Gardens are within walking distance.



Kitchen

Lower Ground





Principal

First Floor



FEATURES

Kitchen/Dining Room

Two En-Suite Bathrooms

Two Reception Rooms

Family Bathroom

Utility Room

Shower Room

Four Bedrooms

OTHER USEFUL INFORMATION

EPC

C

Council Tax Band

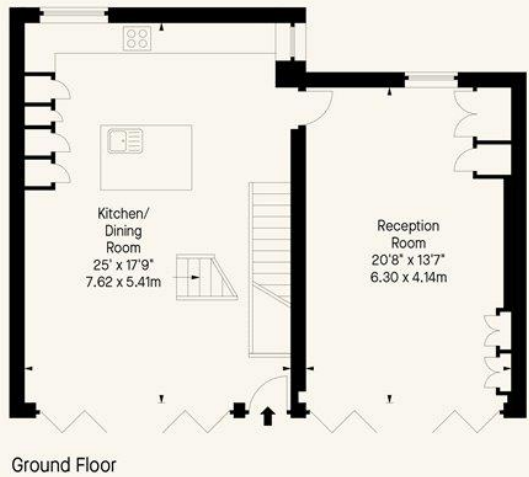
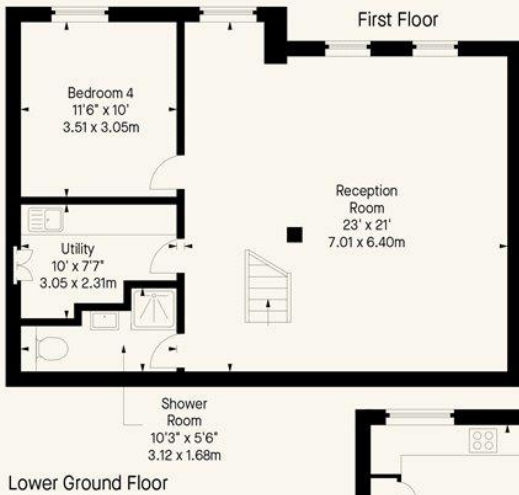
G

NEAREST TUBE STATIONS

Lancaster Gate (Central Line) Paddington (Circle, District and

Mainline Services)

Bathurst Mews, W2
Approx. Gross Internal Area *
2161 Ft² - 200.76 M²



Hyde Park
37-41 Sussex Place, Hyde Park,
London W2 2TH

South Kensington
4-5 Kynance Place, South Kensington,
London SW7 4QS

WWW.LUROTBRAND.CO.UK



Members of NAEA, ARLA, onthemarket.com. Lurot Brand (2) Limited T/A Lurot Brand. Registered in England No. 02035540. Registered Office: 37-41 Sussex Place, London, W2 2TH. VAT No. 629 099 505. www.lurotbrand.co.uk

We have produced these sales particulars as a general guide. We have not carried out a detailed survey of the property and have not tested the services, appliances, or specific fittings. Room sizes are for general guidance purposes and should not be relied upon for fitting carpets or furnishings. Pictures may have been digitally enhanced. Floor plans are not to scale. Fittings shown on floor plans may not match the actual layout or size of fittings at the property. None of the statements as to the property contained in these particulars are to be relied upon as statements or representations of fact. Any reference to alterations to, or use of, any part of the property does not mean that any necessary planning, building regulations or other consent has been obtained. A buyer or lessee must find out by inspection or in other ways that these matters have been properly dealt with and that all information is correct.

All statements in these particulars as to this property are made without responsibility on the part of Lurot Brand. The Seller does not make or give and neither Lurot Brand or any person in their employment has any authority to make or give any representation or warranty whatever in relation to this property.