



Cranley
Mews

SW7



A rare development opportunity with planning permission granted to create an extraordinary mews home in one of South Kensington's finest mews.

Currently undermodernized, this double house has planning permission (**PP PP/21/03962**) to create a four bedroom mews house with over 2,000 sq ft across two floors. Finding lateral space like this in a mews house is hard to come by, particularly in such popular mews addresses such as Cranley Mews.



Location

Tucked away behind Cranley Gardens is the picturesque and sought-after Cranley Mews. A classic mews and wonderful local community close to the bars, shops and restaurants of South Kensington and Chelsea.

Accommodation

Reception Room

Kitchen/Dining Room

Garage

Two Bedrooms

Bathroom

Terms

Tenure

Freehold

Guide Price

£4,250,000

Local Authority

The Royal Borough of
Kensington & Chelsea

Council Tax

Band H

EPC

Rating E



Proposed living room



Computer generated artistic impression

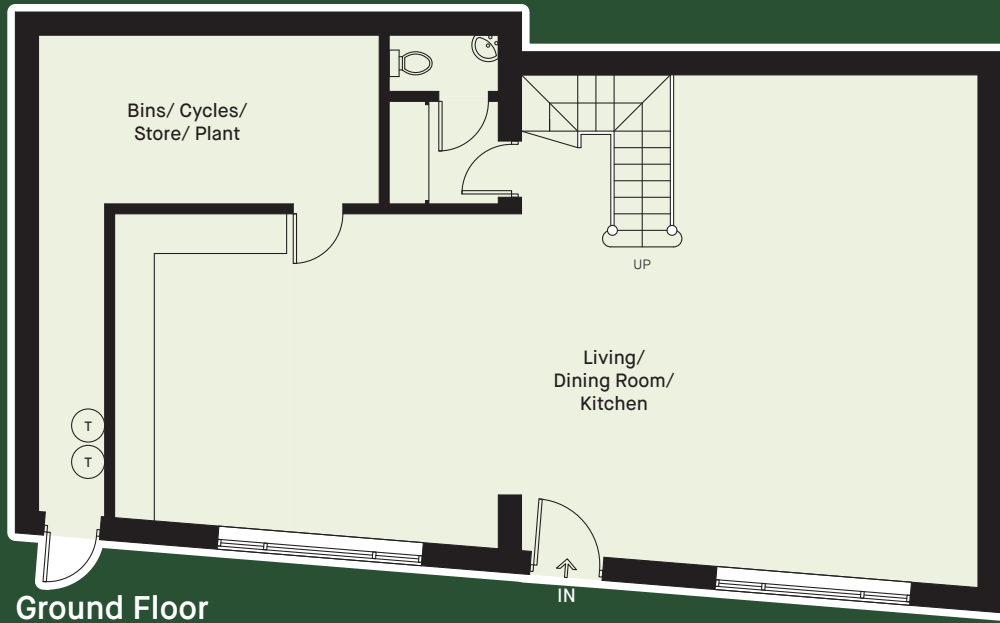
Proposed plans



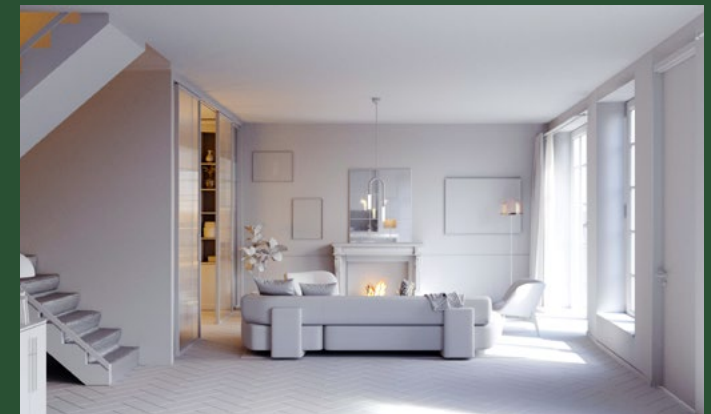
APPROXIMATE AREA

2,287 sq ft

213.5 sq m



This plan was supplied to the Brochure by Lubrot Brand

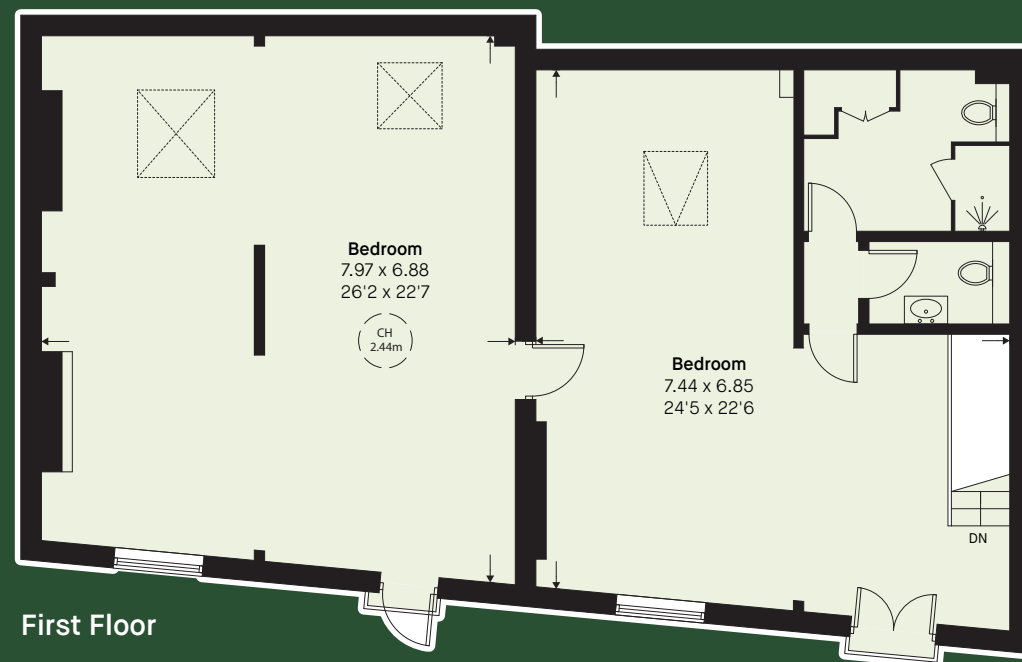
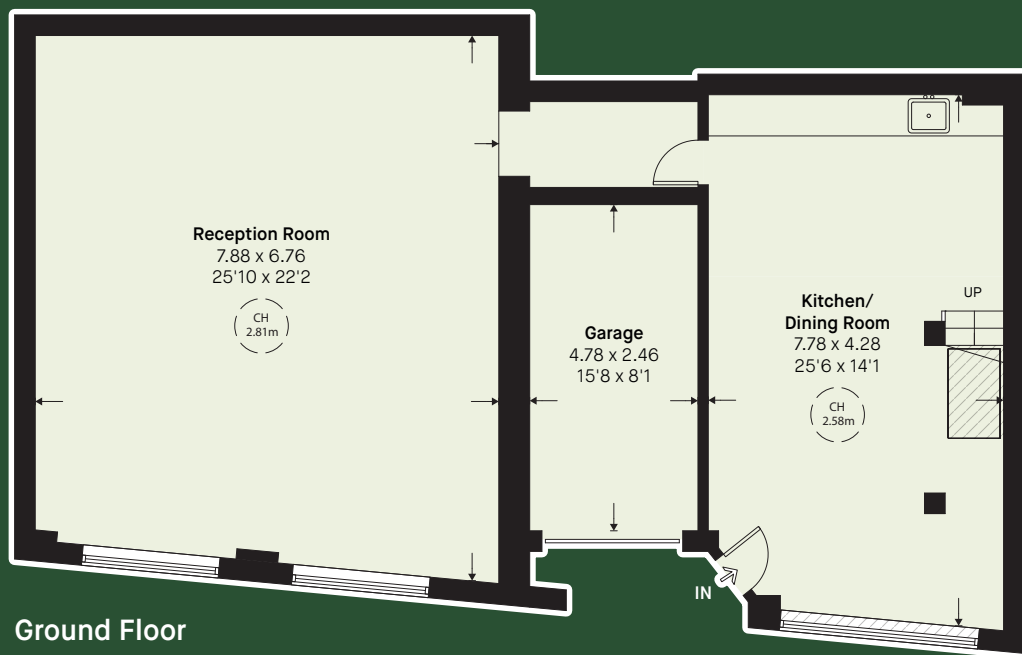


Computer generated artistic impressions

Existing plans



APPROXIMATE AREA	GARAGE	TOTAL
2,126 sq ft 197.5 sq m	125 sq ft 11.6 sq m	2,251 sq ft / 209.1 sq m including limited use area 16 sq ft / 1.5m



The plan was supplied to the Brochure by Lurot Brand

LUROT BRAND

MEWS SPECIALISTS EST. 1971

020 7590 9955

LUROTBRAND.CO.UK

Members of NAEA, ARLA, onthemarket.com. Lurot Brand (2) Limited T/A Lurot Brand. Registered in England No. 02035540. Registered Office: 37-41 Sussex Place, London, W2 2TH. VAT No. 629 099 505. www.lurotbrand.co.uk N.B. This company name will change back to Lurot Brand Limited within the next 6 months. We have produced these sales particulars as a general guide. We have not carried out a detailed survey of the property and have not tested the services, appliances, or specific fittings. Room sizes are for general guidance purposes and should not be relied upon for fitting carpets or furnishings. Pictures may have been digitally enhanced. Floor plans are not to scale. Fittings shown on floor plans may not match the actual layout or size of fittings at the property. None of the statements as to the property contained in these particulars are to be relied upon as statements or representations of fact. All statements in these particulars as to this property are made without responsibility on the part of Lurot Brand. The Seller does not make or give and neither Lurot Brand or any person in their employment has any authority to make or give any representation or warranty whatever in relation to this property. 20/03/23 LUROTB-230314-03GG

THE BROCHURE