



# Ennismore Gardens Mews, SW7

**LUROT BRAND**

MEWS SPECIALISTS EST. 1971

020 7590 9955  
[sales@lurotbrand.co.uk](mailto:sales@lurotbrand.co.uk)



Ground Floor

Ground Floor



# Ennismore Gardens

## Mews, SW7

Freehold

£3,275,000 STC

---

Moments from Kensington Gardens, this quaint two-bedroom house is located on a picturesque, cobbled street in Knightsbridge.

The property offers well-proportioned living space, impressive ceiling height and windows at the rear, atypical for most mews properties. The ground floor has a large reception room, a garage and ground floor bedroom with ensuite. A central staircase leads up to the first floor which hosts the dining area and kitchen, a master bedroom with ensuite, and an office which could be converted into a third bedroom. Ennismore Gardens Mews is a very well-preserved mews, with many buildings retaining original features, including a consistent and unbroken parapet line.

### LOCATION

Ennismore Gardens Mews is situated at walking distance from Hyde Park, and famous locations such as the Royal Albert Hall, Harrods and the Natural History Museum.



Ground Floor

First Floor







First Floor

First Floor



## FEATURES

Kitchen	Two En Suite Bathrooms
Dining Room	Study
Reception Room	Garage
Two Bedrooms	W/C

## OTHER USEFUL INFORMATION

EPC	D
Council Tax Band	H

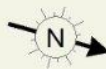
## NEAREST TUBE STATIONS

South Kensington & Knightsbridge (Circle and District and Piccadilly lines)

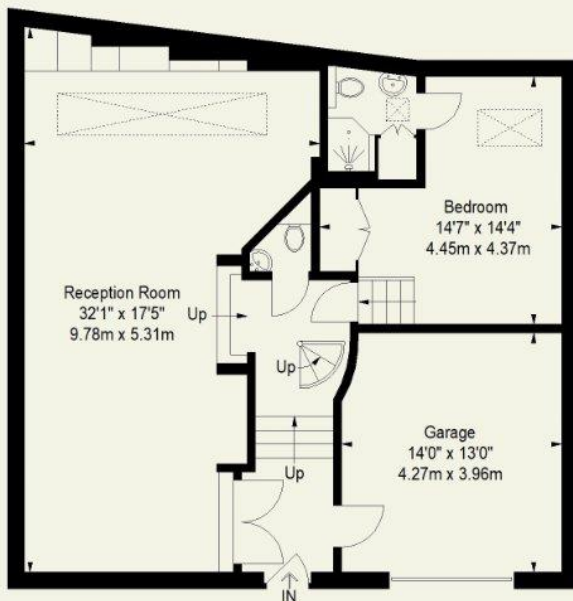
# Ennismore Gardens Mews, SW7

Approximate Gross Internal Area  
(Excluding Void / Including Garage)

1725 FT<sup>2</sup> ~ 160.3 M<sup>2</sup>



**First Floor**



**Ground Floor**

Whilst every attempt has been made to ensure the accuracy of the floorplan contained here, measurements of doors, windows, rooms and any other item are approximate and no responsibility is taken for any error, omission, or misstatement. This plan is for guidance only and must not be relied upon as a statement of fact. Attention is drawn to the important notice on the last page of the text in the particulars.

Hyde Park  
37-41 Sussex Place, Hyde Park,  
London W2 2TH

South Kensington  
4-5 Kynance Place, South Kensington,  
London SW7 4QS

**WWW.LUROTBRAND.CO.UK**



Members of NAEA, ARLA, onthemarket.com. Lurot Brand (2) Limited T/A Lurot Brand. Registered in England No. 02035540. Registered Office: 37-41 Sussex Place, London, W2 2TH. VAT No. 629 099 505. [www.lurotbrand.co.uk](http://www.lurotbrand.co.uk)

We have produced these sales particulars as a general guide. We have not carried out a detailed survey of the property and have not tested the services, appliances, or specific fittings. Room sizes are for general guidance purposes and should not be relied upon for fitting carpets or furnishings. Pictures may have been digitally enhanced. Floor plans are not to scale. Fittings shown on floor plans may not match the actual layout or size of fittings at the property. None of the statements as to the property contained in these particulars are to be relied upon as statements or representations of fact. Any reference to alterations to, or use of, any part of the property does not mean that any necessary planning, building regulations or other consent has been obtained. A buyer or lessee must find out by inspection or in other ways that these matters have been properly dealt with and that all information is correct.

All statements in these particulars as to this property are made without responsibility on the part of Lurot Brand. The Seller does not make or give and neither Lurot Brand or any person in their employment has any authority to make or give any representation or warranty whatever in relation to this property.