



Sherlock Mews, W1U

LUROT BRAND

MEWS SPECIALISTS EST. 1971

020 7590 9955
sales@lurotbrand.co.uk



First Floor

First Floor



Sherlock Mews, W1U

Leasehold Approx. 175 years

£1,600,000 STC

A charming three bed mews house in the heart of Marylebone

A beautifully well-kept mews house located in a quiet mews in central Marylebone.

The ground floor offers a large entrance hall and ground floor bedroom with en-suite bathroom. The first floor offers very bright open plan living and fully fitted kitchen. The top floor benefits from two further bedrooms with good storage and a family bathroom.

LOCATION

The house is located a stone's throw from Baker Street Underground station and is a short walk to Marylebone village with its popular bars, restaurants and shops.



Second Floor

Second Floor





First Floor

External



FEATURES

Kitchen/Dining/Reception	Family Bathroom
Ground Floor Bedroom Suite	W/C
Two Further Bedrooms	Entrance Hall

OTHER USEFUL INFORMATION

EPC	C
Council Tax Band	G
Annual Ground Rent	Peppercorn
Annual Service Charge	£2,600


NEAREST TUBE STATIONS

Baker Street (Bakerloo, Circle, Hammersmith & City, Jubilee and Metropolitan lines)

Sherlock Mews, W1U

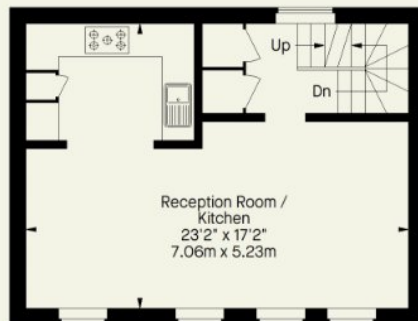
Approximate Gross Internal Area
1051 FT² - 97.6 M²



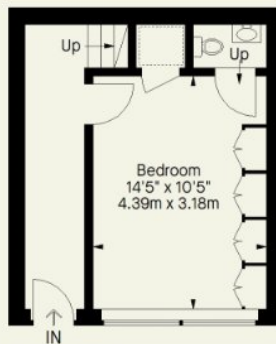
 = Reduced headroom below 1.5 m / 5'0



Second Floor



First Floor



Ground Floor

Whilst every attempt has been made to ensure the accuracy of the floorplan contained here, measurements of doors, windows, rooms and any other item are approximate and no responsibility is taken for any error, omission, or misstatement. This plan is for guidance only and must not be relied upon as a statement of fact. Attention is drawn to the important notice on the last page of the text in the particulars.

Hyde Park
37-41 Sussex Place, Hyde Park,
London W2 2TH

South Kensington
4-5 Kynance Place, South Kensington,
London SW7 4QS

WWW.LUROTBRAND.CO.UK



Members of NAEA, ARLA, onthemarket.com. Lurot Brand (2) Limited T/A Lurot Brand. Registered in England No. 02035540. Registered Office: 37-41 Sussex Place, London, W2 2TH. VAT No. 629 099 505. www.lurotbrand.co.uk

We have produced these sales particulars as a general guide. We have not carried out a detailed survey of the property and have not tested the services, appliances, or specific fittings. Room sizes are for general guidance purposes and should not be relied upon for fitting carpets or furnishings. Pictures may have been digitally enhanced. Floor plans are not to scale. Fittings shown on floor plans may not match the actual layout or size of fittings at the property. None of the statements as to the property contained in these particulars are to be relied upon as statements or representations of fact. Any reference to alterations to, or use of, any part of the property does not mean that any necessary planning, building regulations or other consent has been obtained. A buyer or lessee must find out by inspection or in other ways that these matters have been properly dealt with and that all information is correct.

All statements in these particulars as to this property are made without responsibility on the part of Lurot Brand. The Seller does not make or give and neither Lurot Brand or any person in their employment has any authority to make or give any representation or warranty whatever in relation to this property.